

**HIKING TRAILS**

- BLUE: Easy**  
For the most part good trails with a smooth surface, without any significant obstructions or difficulties.
- RED: Challenging**  
Routes and trails which may include lengthy rough, difficult sections, and obstructions such as unbridged brooks or small rivers, loose gravel, steep sections, and so forth.
- BLACK: Difficult**  
Routes and trails involving obstacles and difficulties, such as sizeable unbridged rivers, steep slopes and cliff barriers, which may prove hazardous to the inexperienced or in poor conditions.

**ASKJA AND DREKAGIL**

- A-1 Vikraborgir-Öskjuvatn 2.5 km →**  
Askja eruption history, Víti, Öskjuvatn, visitors' guest book at the monument to the Germans. **Caution!** The descent into Víti is slippery, and rock and mud slides may occur.
- A-2 Dreki – Dyngjufljót – Víti 8 km, rise in elevation 500 m →**  
Good view south and into Askja, lava formations, tephra.
- A-3 Up into Drekgil 0.6 km ↔**  
Hyaloclastite formations, lava, hardy plants, waterfall. **Caution!** Risk of rock and mud slides during snow thaws.
- A-4 Dreki – Nautagil 6 km, rise in elevation 100 m ↔**  
Good view, hyaloclastite and lava formations, plants.

**HERÐUBREIÐARLINDIR**

- Hb-1 Áltavatn 3.5 km ↔**  
Plants, birds, lava.
- Hb-2 Lindahraun lava 1.7 km ↔**  
Lava, Eyvindur's hideout, navel lichens, moss.

- Hb-3 Lava along Lindá 2.5 km ↔**  
Eyvindur's hideout, lava field margin and lava plants, Lindá and its gravel banks.
- Hb-4 Junction of Jökulsá and Kreppla 3.4 km ↔**  
Polished rock outcrops, lava formations, river junction, plants.
- Hb-5 Climb onto Herðubreið 2.6 km, rise in elevation 1000 m**  
Wide panorama. **Caution!** Great risk of falling or sliding rocks.

**HVANNALINDIR**

- Hv-1 Parking area – ruins 1.8 km ↔**  
Plants, hideout ruins.
- Hv-2 Parking area – Krepplubring 2.5 km ↔**  
View, river running through narrow gorge.

**KVERKJÖLL**

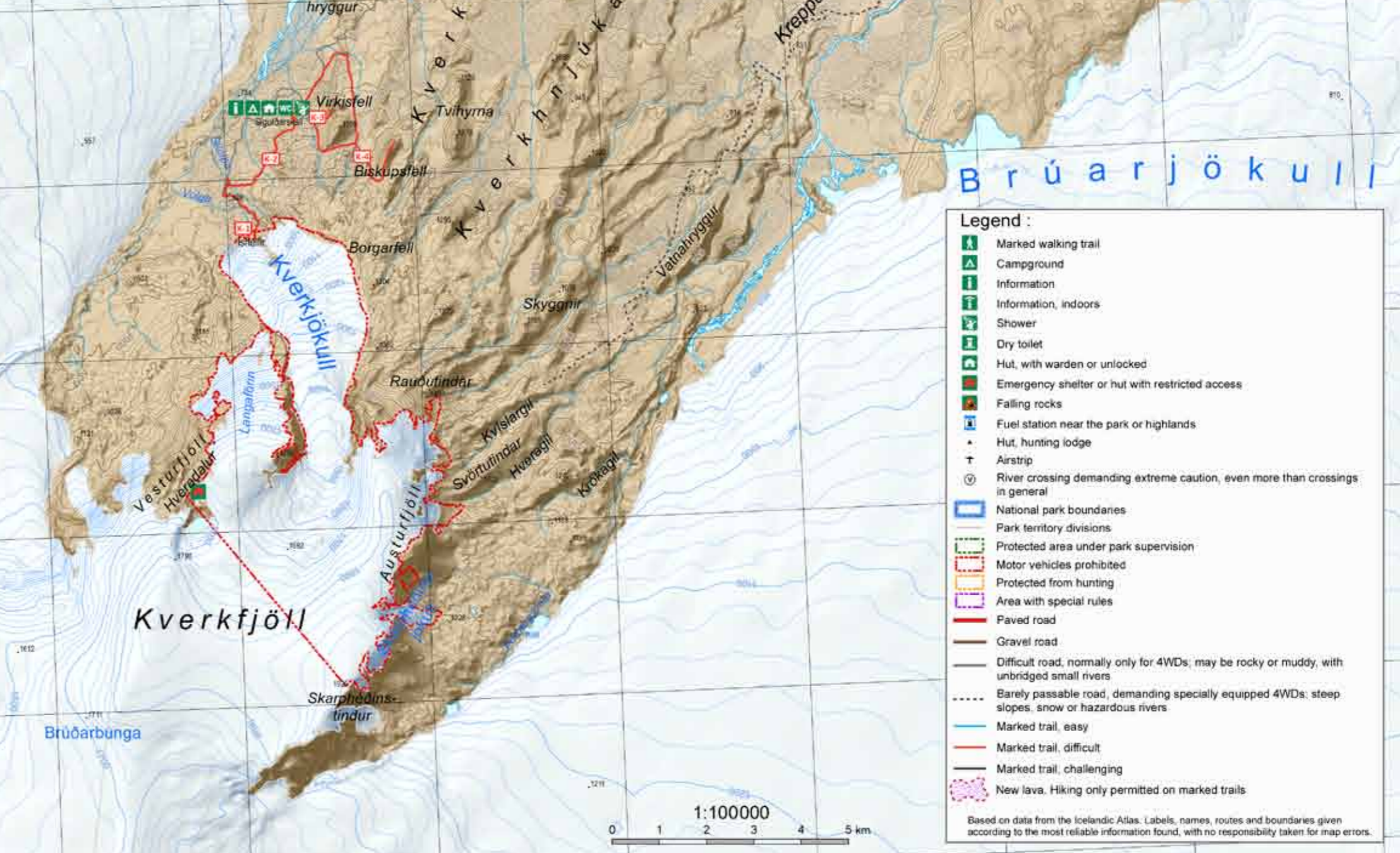
- K-1 Parking area – ice cave 0.5 km →**  
Proximity to glacier, moraines, glacial river, ice cave. **Caution!** Risk of falling ice or rocks
- K-2 Sigurðarskáli hut – Parking area by icecave 3 km**  
Lava formations, moraines, vegetation.
- K-3 Sigurðarskáli hut – Vírkisfell 2.1 km →**  
Volcanic scoria, lava, view.
- K-4 Sigurðarskáli hut – Biskupsfell 9 km ↔**  
Lava formations, view.

**ASKJA TRAIL**

- Ö-1 Herðubreiðarlindir – Bræðrafell 18.3 km**
- Ö-2 Bræðrafell – Drekgil 20.4 km**
- Ö-3 Askja (Vikraborgir) – Dyngjufljót 13.6 km**  
A trail continues from Dyngjufljót north to Suðurrábotnar.

**HOLUHRAUN (NEW LAVA)**

Information about hiking trails in the new Holuhraun lava field is available from park rangers.



**Legend :**

- Marked walking trail
- Campground
- Information
- Information, indoors
- Shower
- Dry toilet
- Hut, with warden or unlocked
- Emergency shelter or hut with restricted access
- Falling rocks
- Fuel station near the park or highlands
- Hunting lodge
- River crossing demanding extreme caution, even more than crossings in general
- National park boundaries
- Park territory divisions
- Protected area under park supervision
- Motor vehicles prohibited
- Protected from hunting
- Area with special rules
- Paved road
- Gravel road
- Difficult road, normally only for 4WDs; may be rocky or muddy, with unbridged small rivers
- Barely passable road, demanding specially equipped 4WDs: steep slopes, snow or hazardous rivers
- Marked trail, easy
- Marked trail, difficult
- Marked trail, challenging
- New lava. Hiking only permitted on marked trails

Based on data from the Icelandic Atlas. Labels, names, routes and boundaries given according to the most reliable information found, with no responsibility taken for map errors.

